



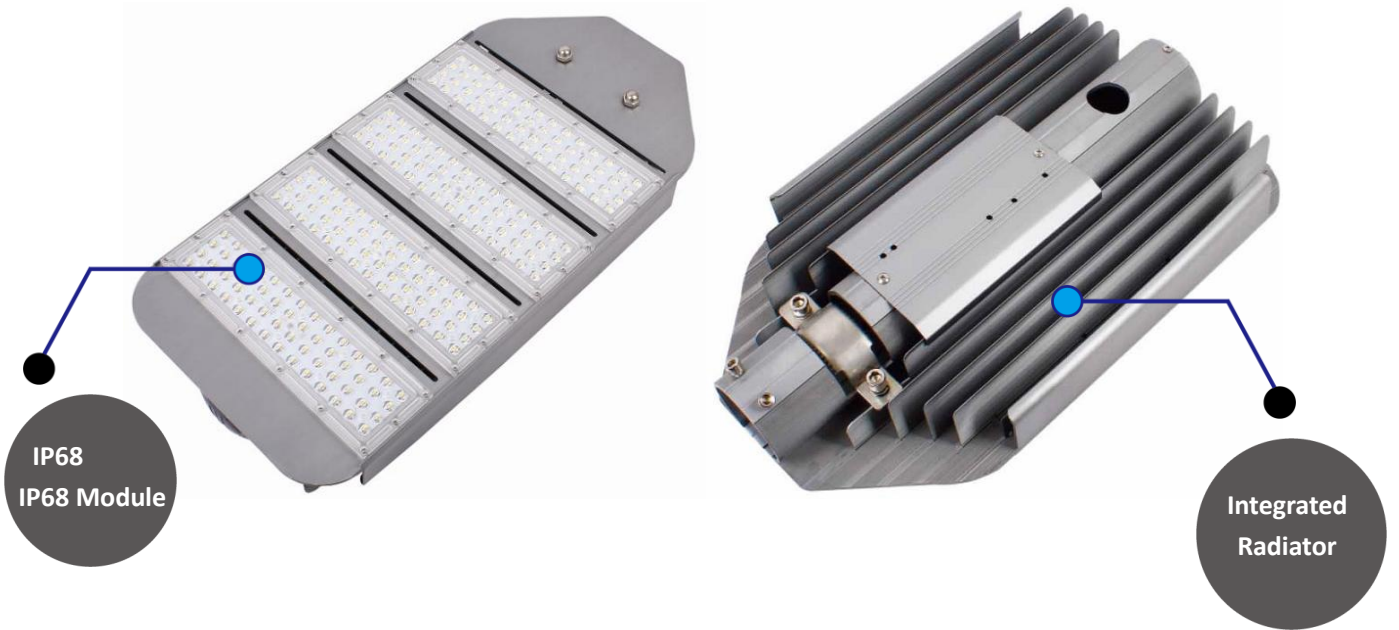
Specification for Road Lamp

AZARTEYF Co.

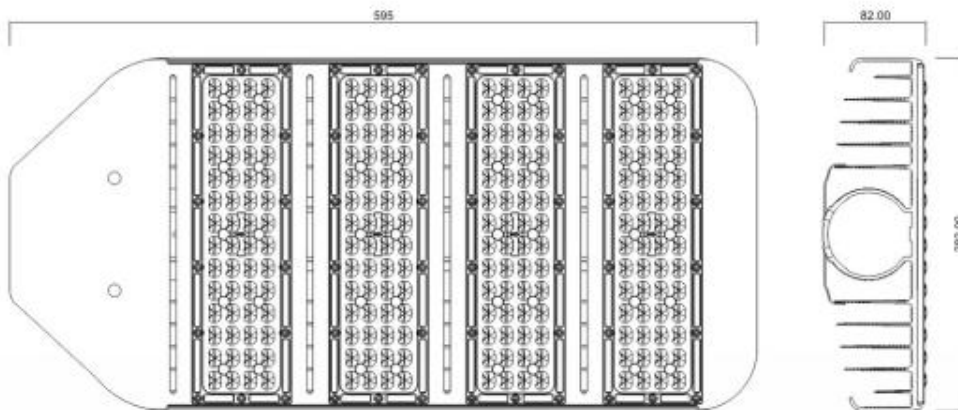
L-C380-180W

WWW.AZARTEYF.COM

I. Production Pictures



II. Production Size



(Unit: mm : mm)



III. Production Parameters



Power Supply

the voltage of input	AC100-240V
the frequency of power	50~60Hz
rated power	180W
power factor	> 0.9
total harmonic distortion	< 10%
the efficiency of power	> 90%

LED Light Source

encapsulation type	3030
the amount of LED LED	4*42
the amount of module	4 pcs
light Effect for Whole Light	110 Lm/W
luminous	19800Lm
CRI	Ra > 70
relevant CCT	3000K - 6000K
average beam angle	150°*65°

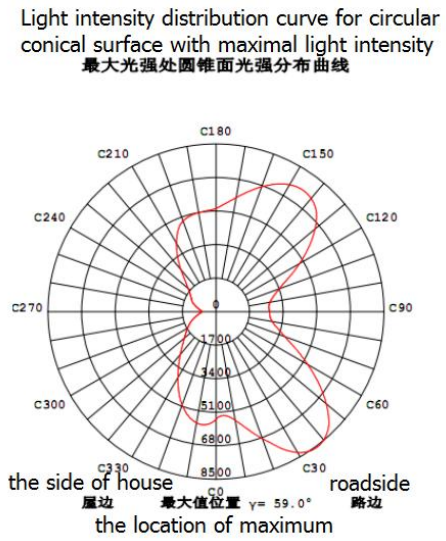
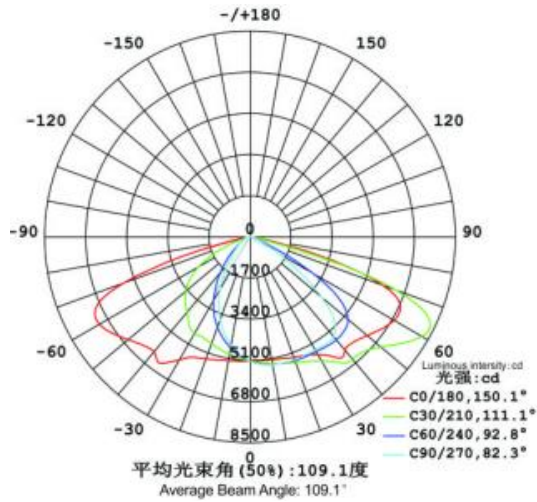
The Environment and Reliability

working temperature	-35 °C ~ 50 °C
working humidity	10 % ~ 90 % RH
storage temperature	-35 °C ~ 60 °C
service life of lamp	50,000 h
material for lamp	aluminum alloy
IP protection level IP	IP66
the protection level of mechanical collision	IK10

Size and Wight

size of lamp	595x282x82mm
net weight	5.5 kg
package size	610x305x120mm
gross weight	7.12 kg

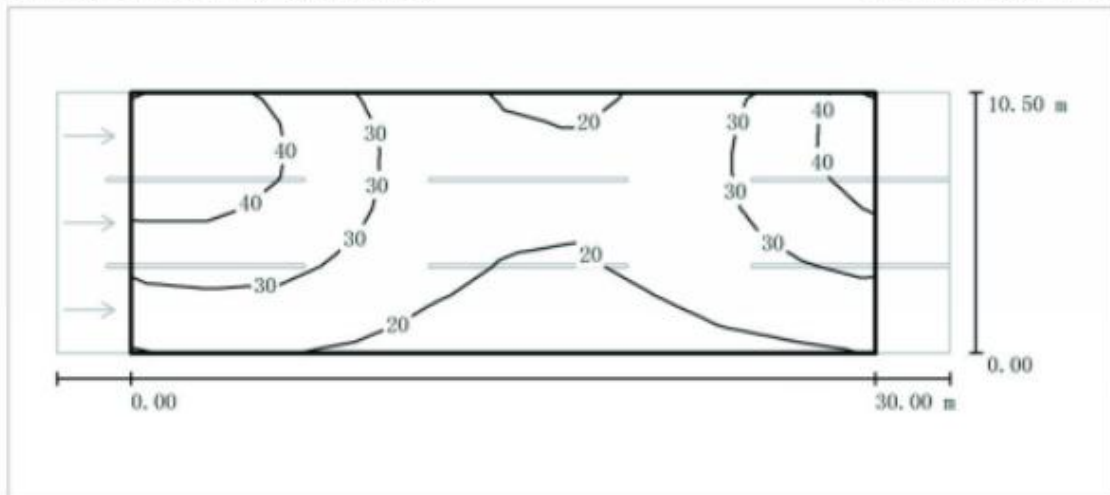
IV. Production Lighting Diagram



V. Road Simulation Diagram

Road1/evaluation area road1/ isolux diagram (illuminance)
道路1 / 评估区域 道路 1 / 等照度图(照度)

Unit: Lux , Scale: 1:258
单位为Lux, 比例 1 : 258

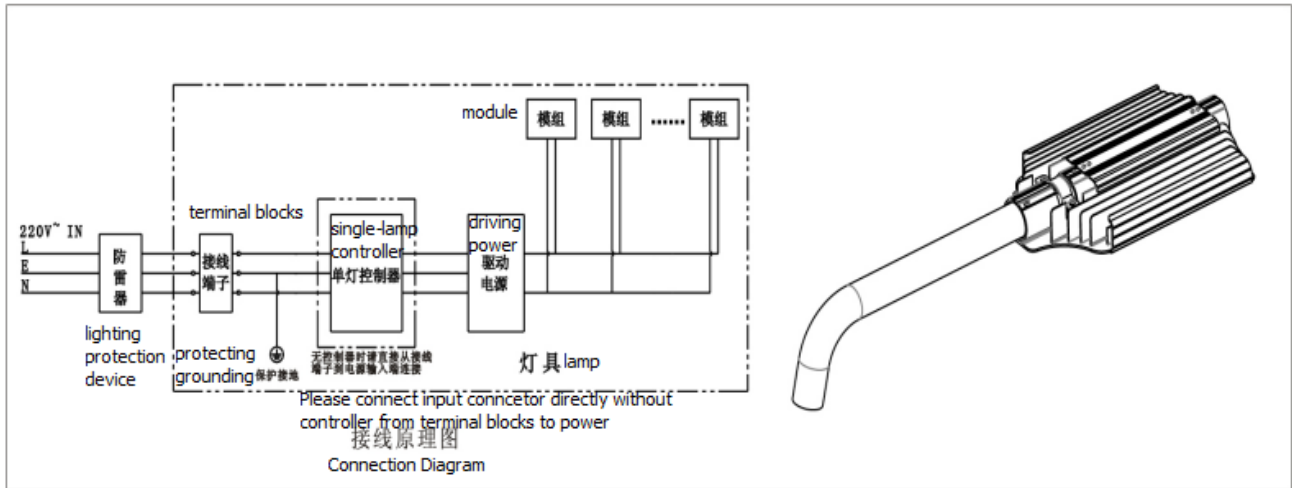


平均照度 [lx]	最小照度 [lx]	最大照度 [lx]	最小照度 / 平均照度	最小照度 / 最大照度
28	15	49	0.547	0.313
Average illuminance	Mix illuminance	Max illuminance	Mix / average illuminance	Mix/average illuminance
28	15	49	0.547	0.313

网格: 10 x 6 点 Gridding : 10 x 6 points

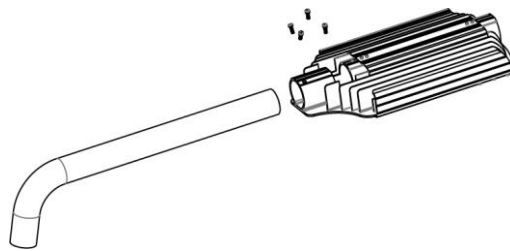
VI.Installation Specification

1. Installation Schematic Diagram

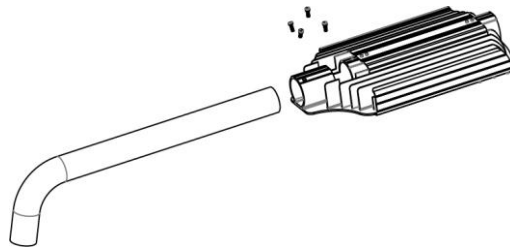


Notes: we offer choices for these configurations , including single-lamp controller , terminal blocks and lightning protection device

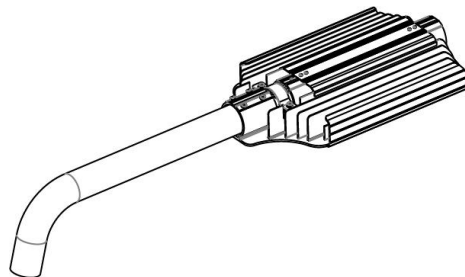
①Loosen the fixed screw of lamp



②Connect input line with the wire inside of lamp bar correspondingly, then seal with electrical tape and waterproof tape firmly.



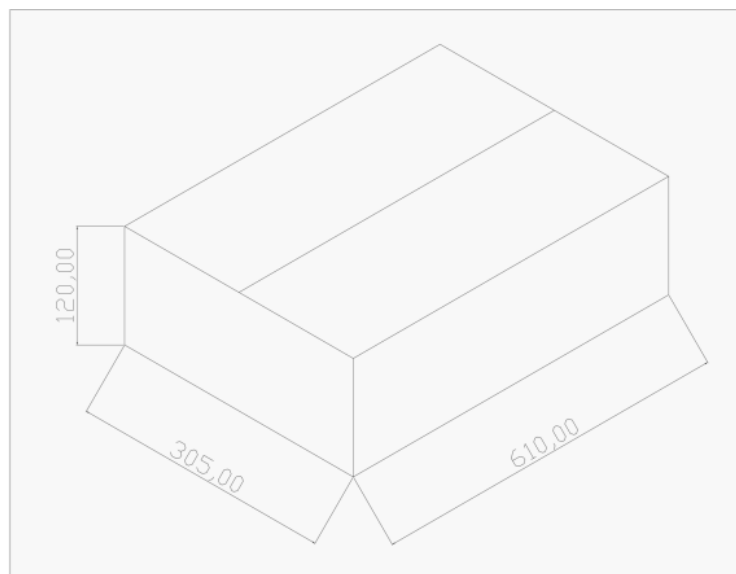
③Put lamp into the bar and adjust the direction, last step is tightening the screw .



2. Remarks

- 2.1 Electrify products after finishing all installation , especially ensure if the ground line has connected correctly ;
- 2.2 Please don' t cover lamp with anything ;
- 2.3 Please don' t use this kind of product in closed environment ;
- 2.4 It must be professional technician to maintain lamp , and non-professional people can' t remove the lamp ;
- 2.5 Please note that we won' t notice you again for changes of products' specification

VII. Package Size



(Unit: mm)

